

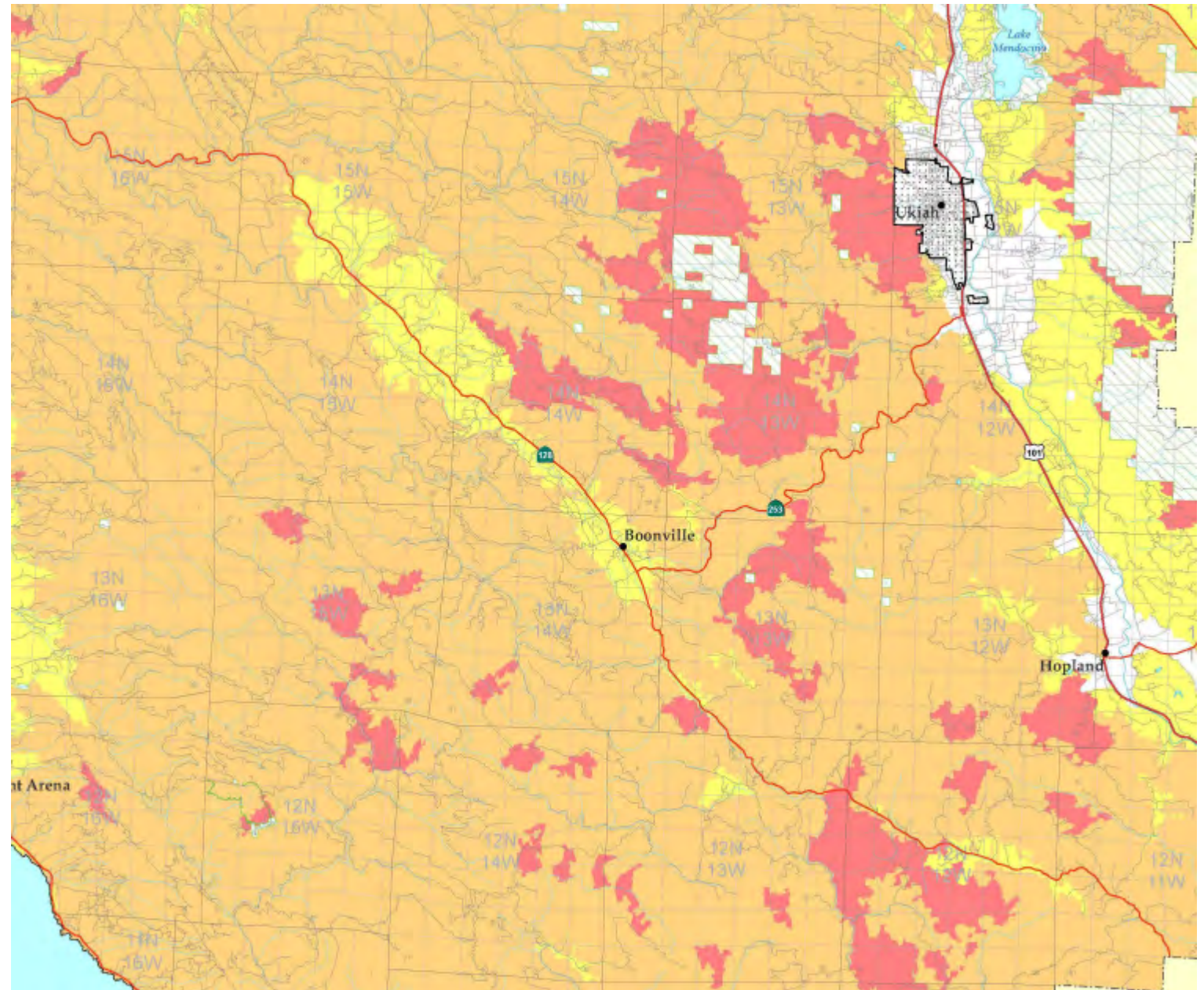
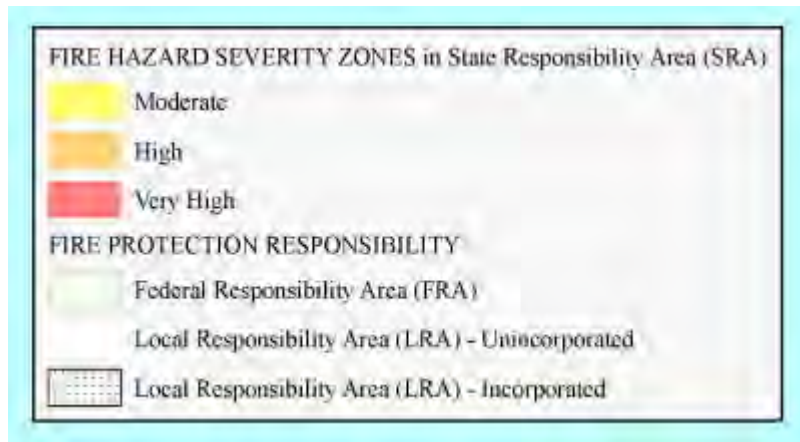


Anderson Valley's Wildfire Overview Chief Avila

- Coastal Influence
- Diverse Vegetation Types
- Terrain
- Inversion /Elevation
- Wildland Urban Intermix
- Capacity of Prevention and Suppression Resources
- Historic/ Current Vegetation Management Practices

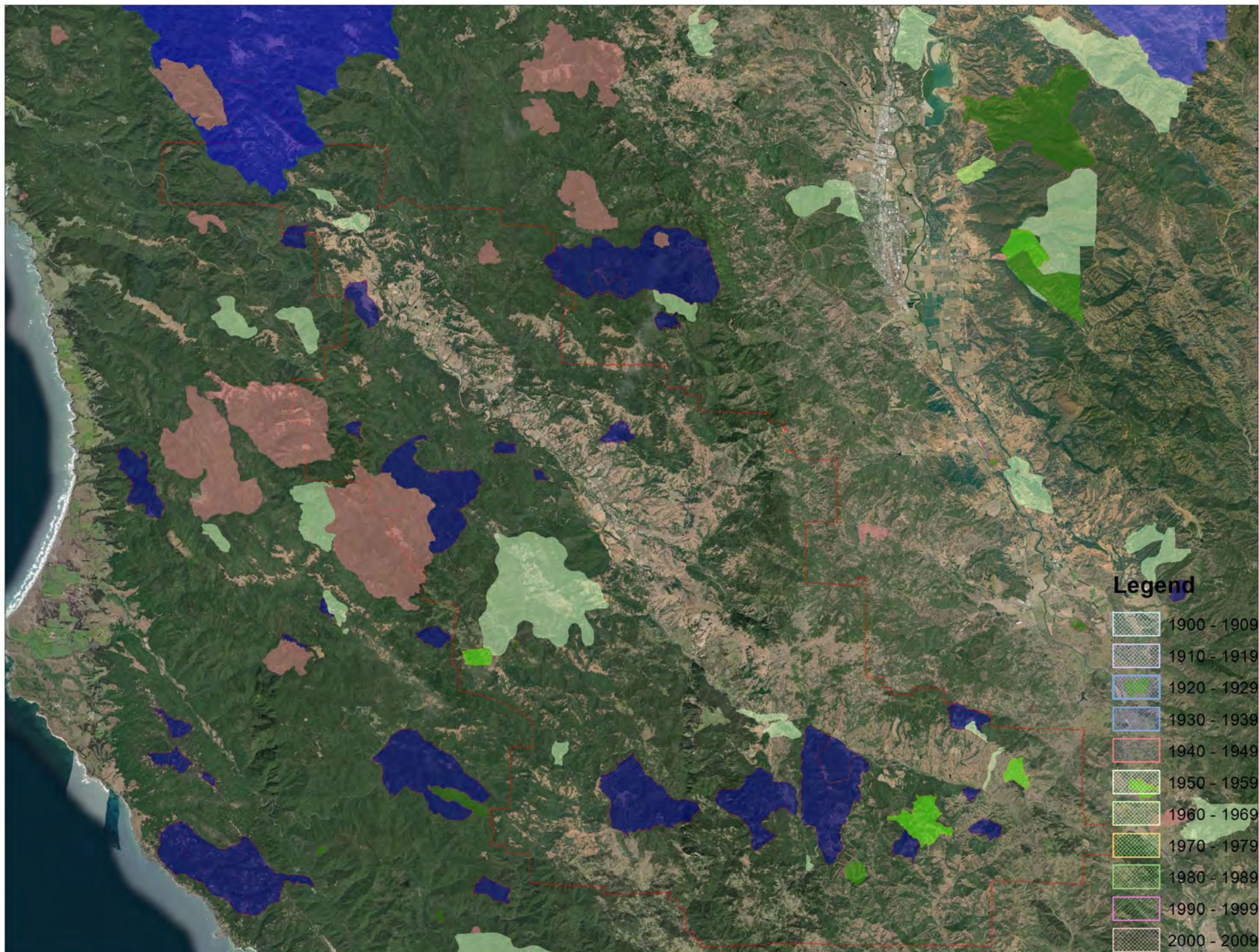


Fire Hazard Severity Zoning (FHSZ)



100 year Fire History

1900 -
2009



Anderson Valley Fire Department



- 336 Square miles of response area
- 40 Volunteers
- 8 Satellite Stations
- 2 Ambulances
- 4 Water tenders
- 3 Wildland engines
- 5 Structure engines
- 6 Quick attacks
- Fire Boxes
- Community Mapping (CaR)
- Road Naming
- RX Burning
- Fuel Reduction projects
- High School Career Pathways / Interns
- Fire Code Inspections
- Water Supply Development



**Fuel Loading /
Changing
Vegetation**

**Fir Encroachment,
Invasive
Chaparral, Tanoak
Density
Dead Fuel Buildup**



Fuel Management



Pasture Grazing



Fuel Management



Mechanical

Fuel Management

Prescribed Burning





SAFETY

**DON'T LET THE
FIRE GET OUT!**



Fuel
Management

Prescribed
Burning



Your Next Steps:

Short Term:

- Analyze your risk
- Create your evacuation plan
- Register with Mendocino County Citizen Alert Notification System
- Identify Safety Zones /TRAs
- Reduce fuels immediately surrounding your residence
- Harden your home
- Improve Egress from your property
- Coordinate with neighbors

Long Range:

- Develop water supply for FF efforts
- Create your vegetation management plan for your property:

NRCS

Fire Safe Council

Private Hire

RX Burning with MCPBA

- Consider property road improvements for egress and ingress