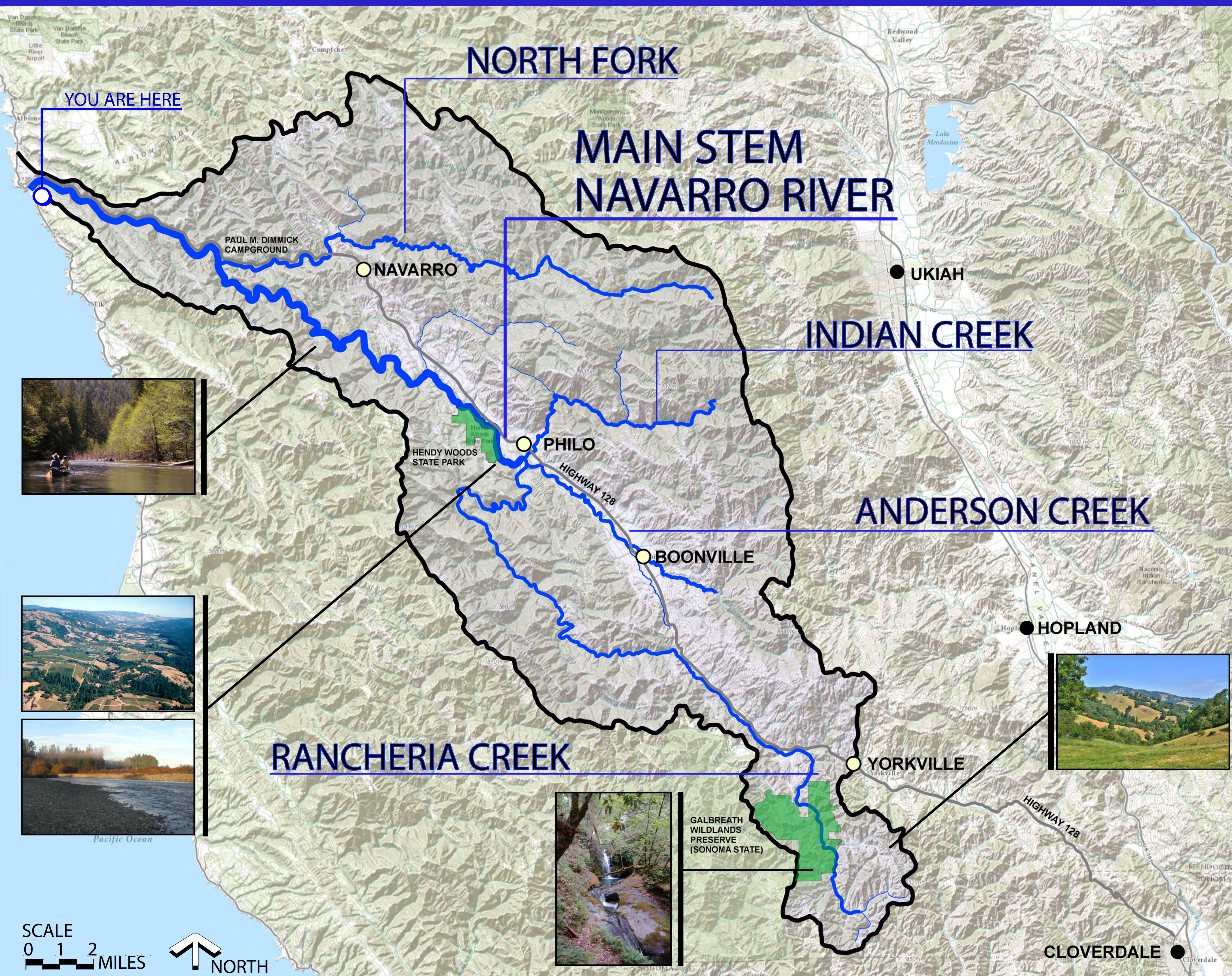


# Navarro River Watershed

The largest coastal basin in Mendocino County  
Approximately 315 square miles in size (201,600 acres)

**DID YOU KNOW?**  
The highest recorded flood flows of the Navarro River were over 60,000 cubic feet per second. That is enough water to cover a football field a foot deep!



### What is the River's Watershed?

The Navarro River travels in a northwesterly direction starting near the town of Philo in the center of Anderson Valley where the Indian Creek, Anderson Creek, and Rancheria Creek sub-basins converge within 1/8 mile of each other. The confluence of these three streams is approximately 3/4 mile upstream from Hendy Woods State Park. The North Fork Navarro River joins the main stem of the river at Paul M. Dimmick Campground in Navarro River Redwoods State Park.

### What Forces Affect the River?

The population of the watershed is about 3,500 people, with most living in and around the towns of Yorkville, Boonville, Philo, and Navarro. Land use in the watershed include forestland (70%), rangeland (25%), and agriculture (5%) with a small percentage devoted to rural residential development. Past and on-going forces that affect the health of the Navarro River include forest conversion, logging, water diversion for agriculture, contaminated runoff, forest fires, and drought. The Navarro River is now considered an impaired waterbody by the Regional Water Quality Control Board.

### How Much Water ?

Though there are diversions of water from the river and many off-stream ponds in the watershed, there are no dams on the river itself to regulate its flows. So during winter storms high flows and flooding are frequent. The river flood stage occurs at an approximate flow of 12,000 cubic feet per second (cfs). State Route 128 as it passes through Navarro River Redwoods State Park is typically closed during these flooding periods. The highest recorded flow was 64,500 cfs on Dec. 22, 1955.

In the summer, the river may flow at a trickle with the median daily late summer flows (August and September) of about 9 cfs.



Visit the Navarro-by-the-Sea-Center website or:

**LEARN MORE HERE**

**CHALLENGE**

The Navarro River is a designated impaired waterbody. How can you support improving the water quality of the river?