

# Anderson Valley Resilient Lands Symposium

Think Like a Watershed!

## State of Anderson Valley Flyover Watershed Perspective



# THE WATERSHED A FLYOVER PERSPECTIVE

**“In nature nothing exists alone.”**

**“The more clearly we can focus our attention on the wonders and realities of the universe about us, the less taste we shall have for destruction.”**

**“The road - the one less traveled by - offers our last, our only chance to reach a destination that assures the preservation of the earth.”**

**Rachel Carson**



# A WATERSHED FLYOVER PERSPECTIVE

- Back to the Future in 10 Minutes
  - Watershed Resiliency
  - Watershed Facts
  - Watershed Past
  - Watershed Present
  - Watershed Future?

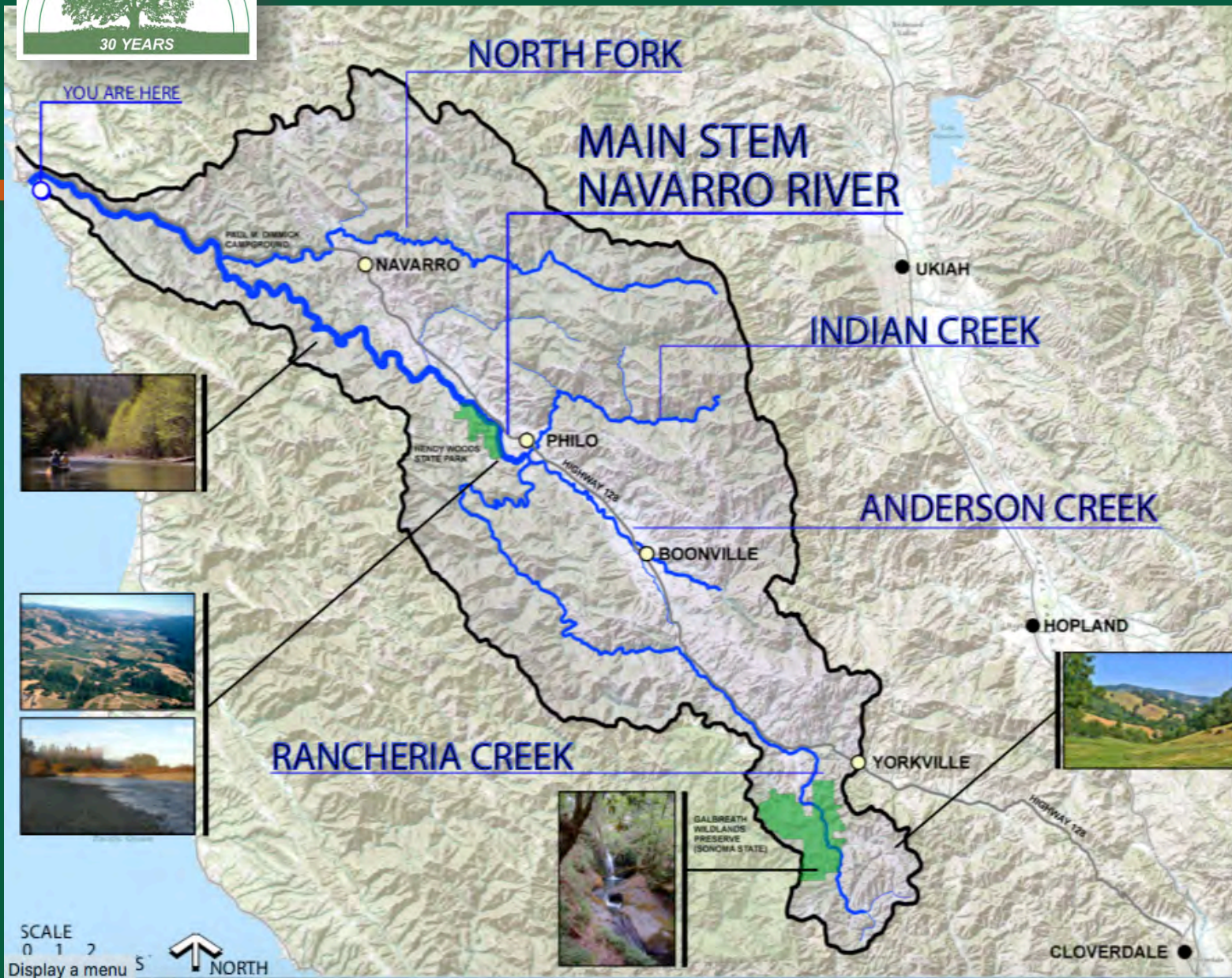


# WATERSHED RESILIENCY: BALANCE OVER TIME





# THE WATERSHED





# THE WATERSHED

## Think

- The largest coastal basin in Mendocino County.
- Approximately 315 square miles in size (201,600 acres).
- Forestland (70%), rangeland (25%), and agriculture (5%) with a small percentage devoted to rural residential development.



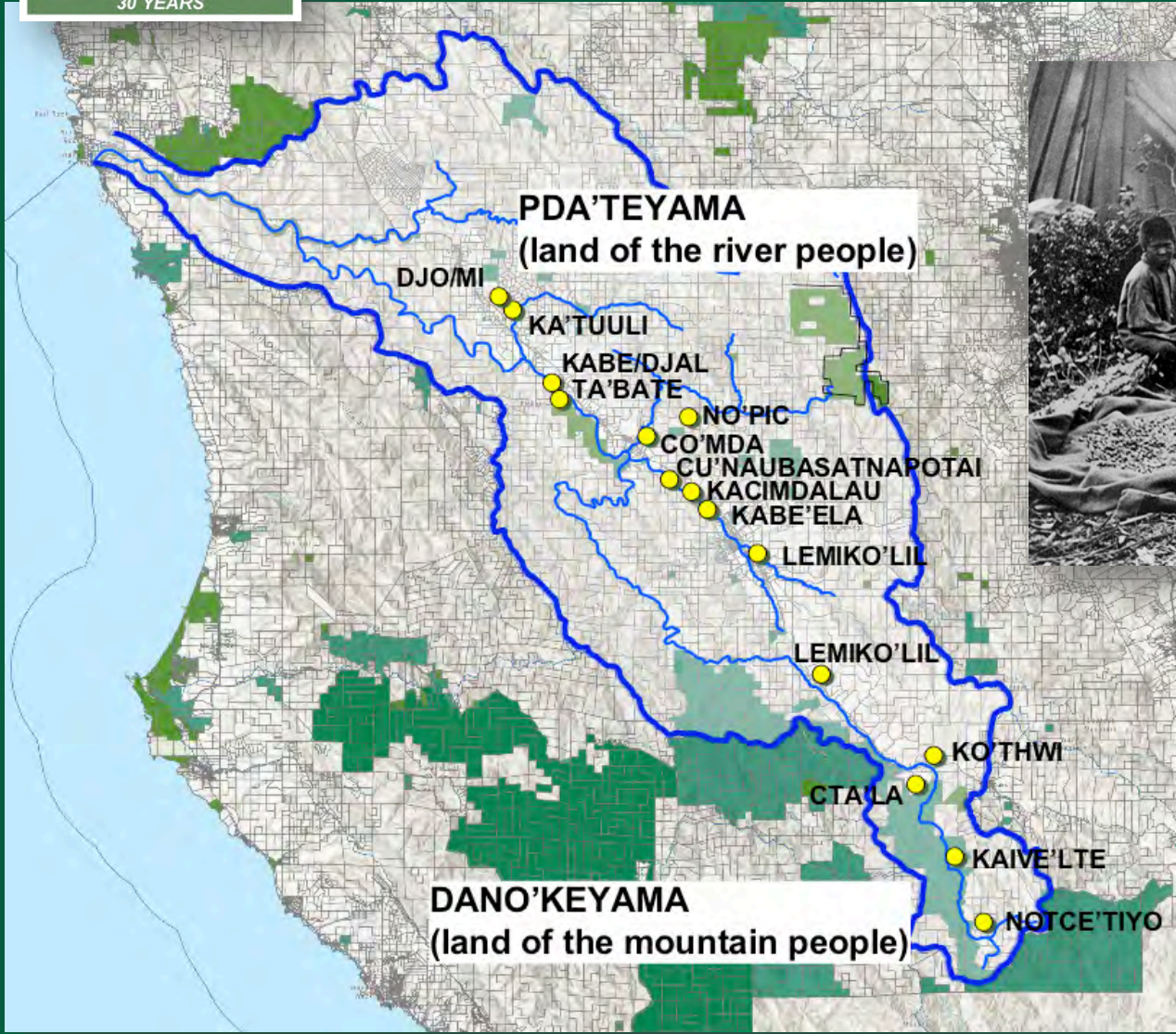
# THE WATERSHED

## ■ Think

- The highest recorded flow of the Navarro River was 64,500 cfs on Dec. 22, 1955.
- The Navarro River at 18,000 cfs on Dec. 7, 2012 (photo from Philo-Greenwood Road bridge).



# The WATERSHED - HISTORY KNOWN POMO SETTLEMENTS



Source: Anderson Valley Historical Museum





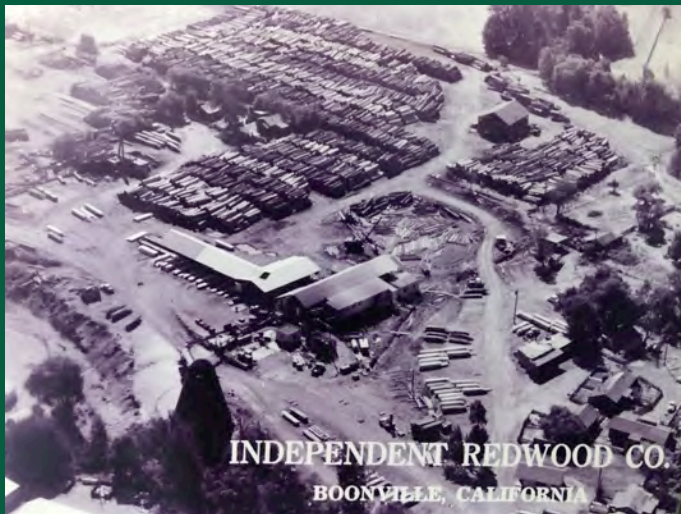
# THE WATERSHED - HISTORY TIMBER • INDUSTRY



WENDLING MILL

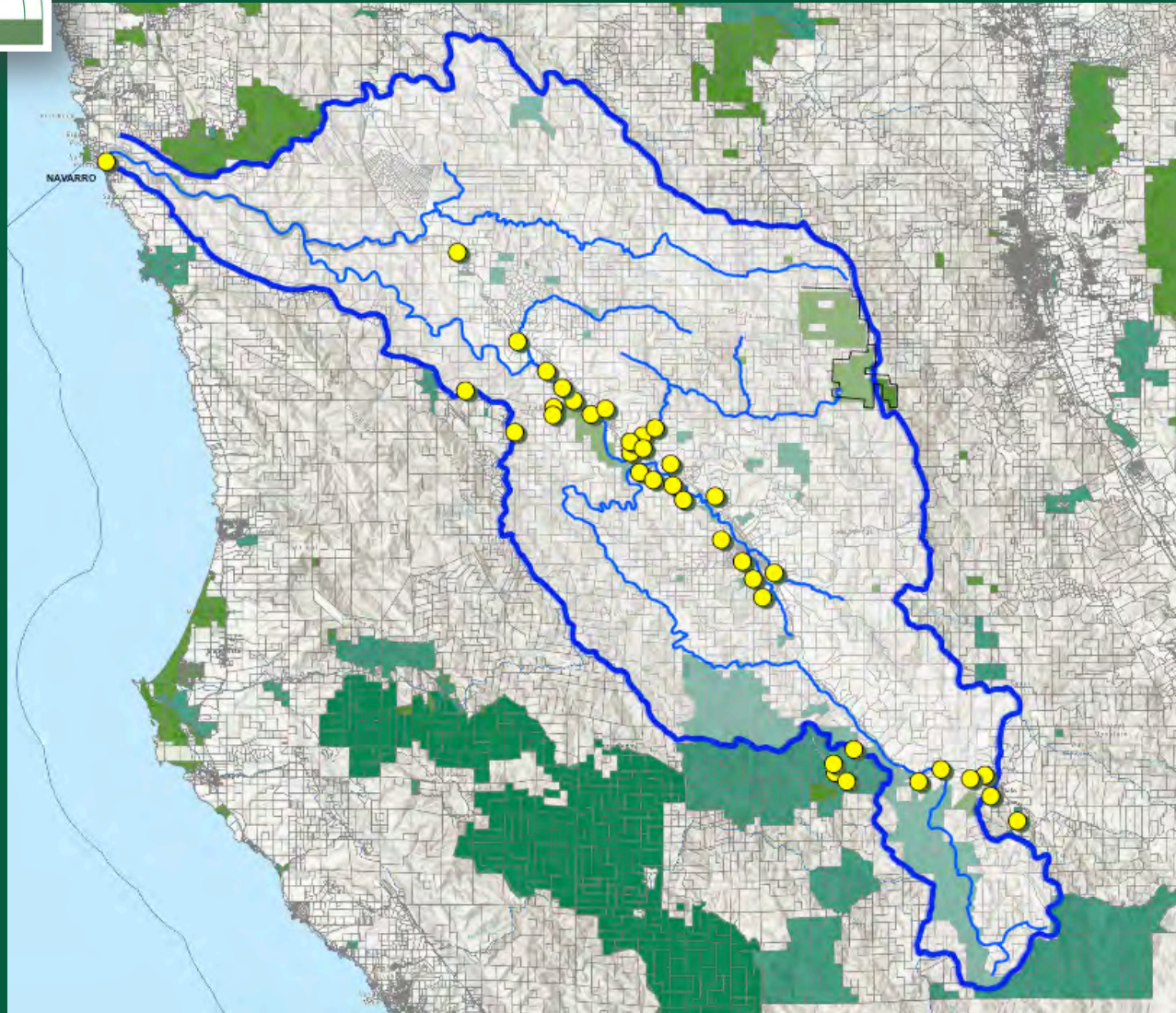


NAVARRO MILL





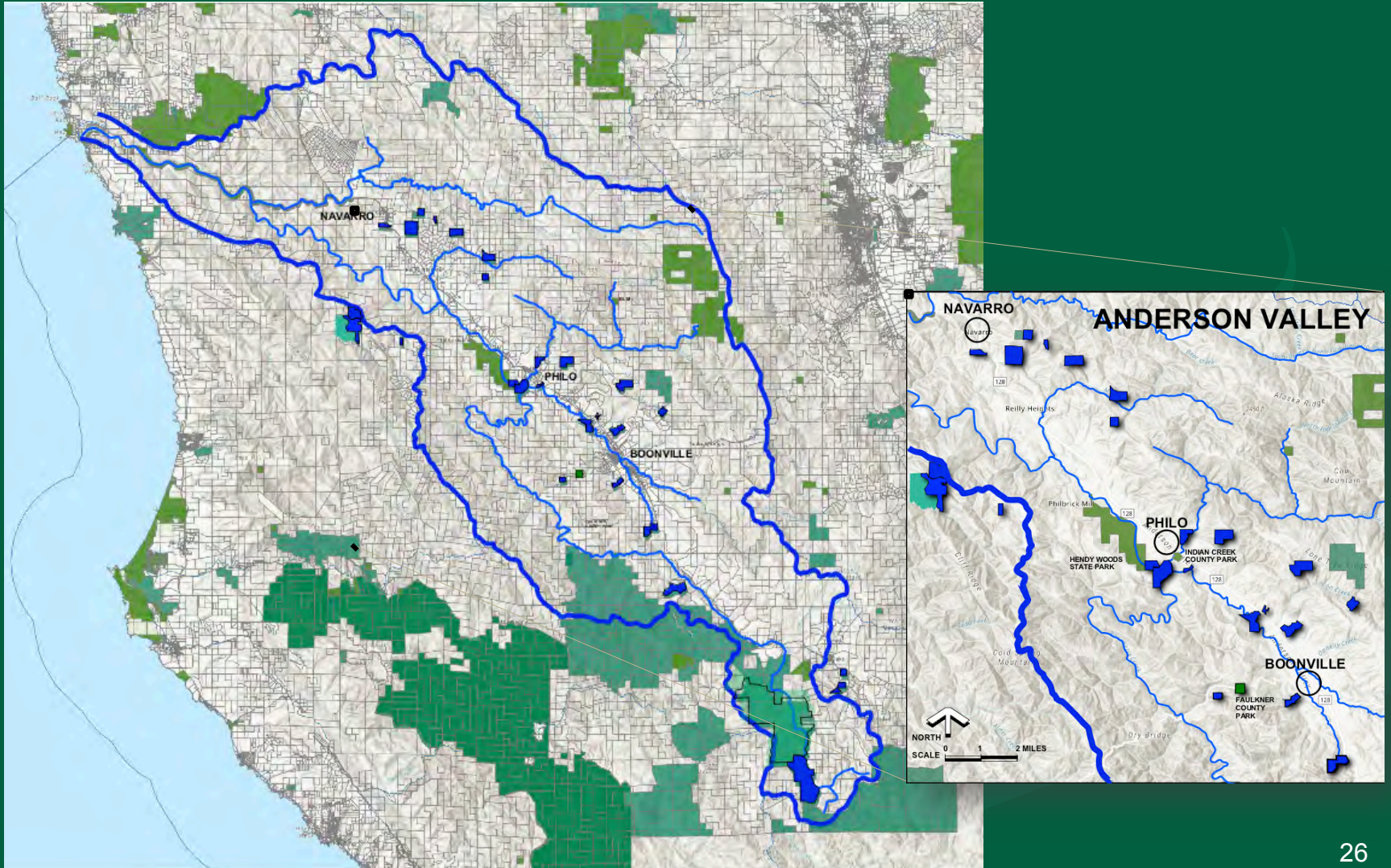
# MAJOR LUMBER MILLS - HISTORY



Source: Anderson Valley Historical Museum / "The Mills of Mendocino County"

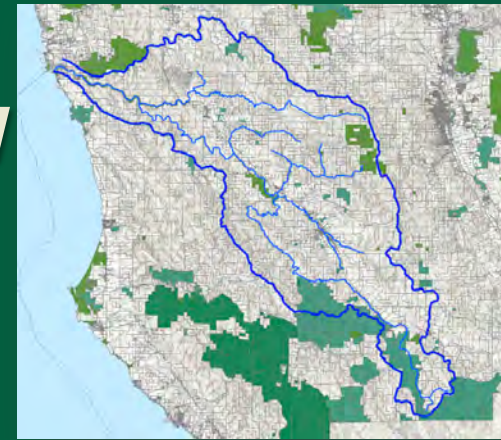


# THE WATERSHED CONSERVED LANDS - NOW





# THE WATERSHED CONSERVED LANDS - NOW

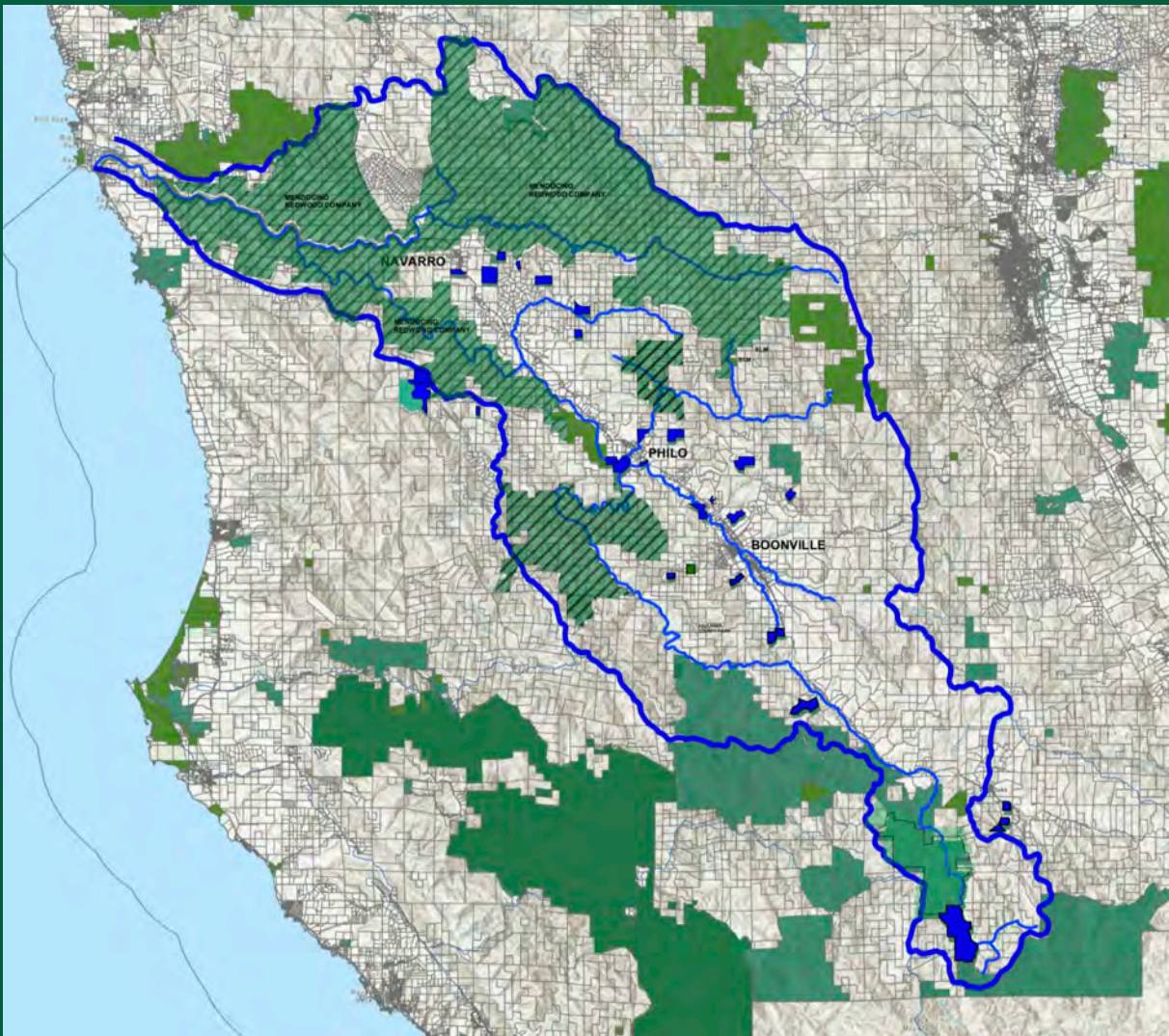


## ■ Think

- Of the 201,600 acres in the watershed:
  - 5,761 acres are in public ownership (2.9%)
  - 13,450 acres are under private conservation easements held by the AVLТ and other conservation organizations (7.0%)
  - 842 acres are fully open for the general public to access and use (0.42%)
- Approximately 3,015 individual land parcels.
- The permanent watershed population is about 3,582 (2020 census)



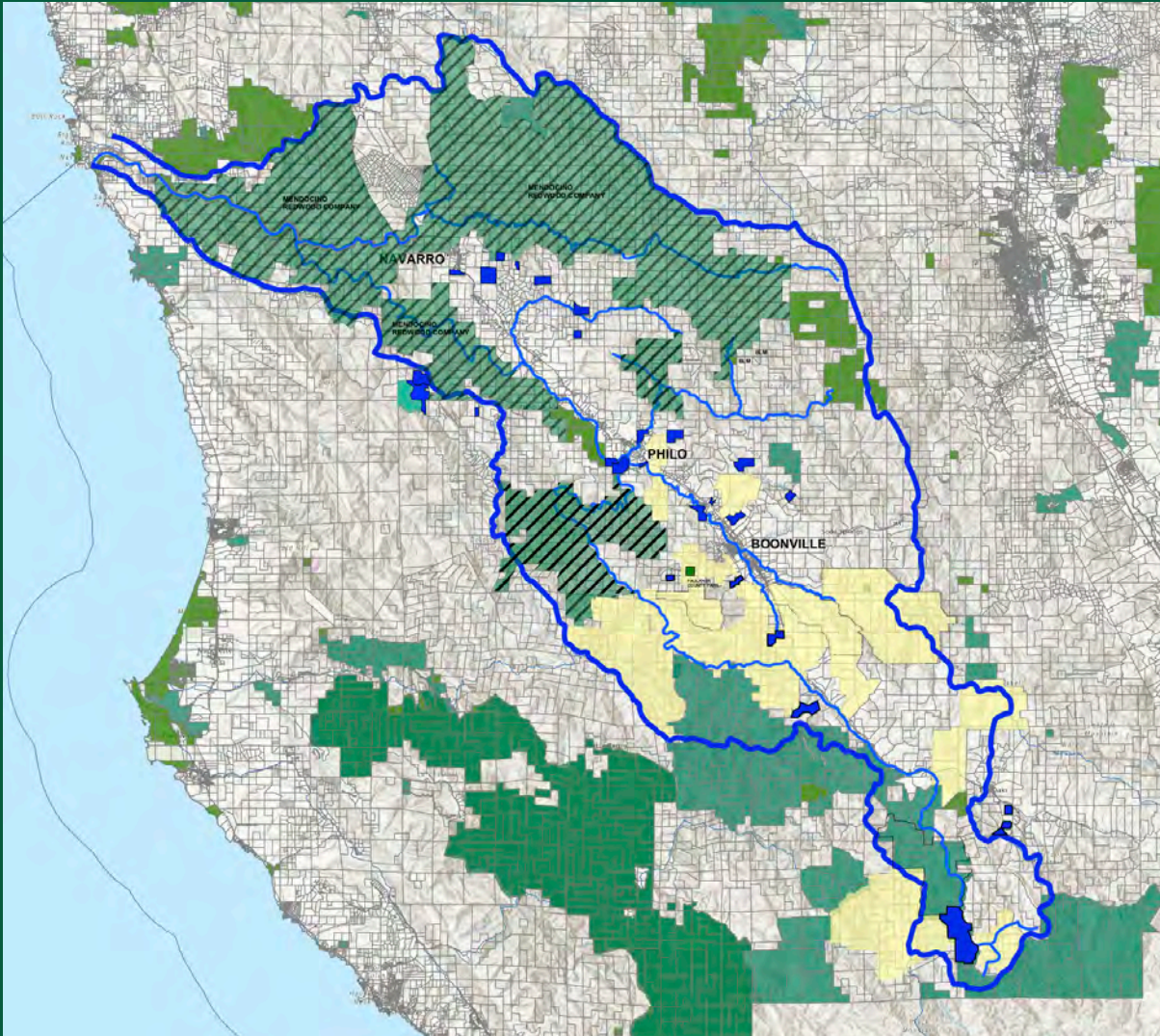
# THE WATERSHED - NOW CONSERVED LANDS + SELECT TIMBER LANDS





# THE WATERSHED - NOW CONSERVED LANDS + SELECT TIMBER LANDS +

# SELECT RANCH LANDS





# AGRICULTURE





# AGRICULTURE

## ■ THINK

- Vineyards (Anderson Valley AVA)
  - 90 Vineyards
  - Appx. 2,457 acres under cultivation\*
- Vineyards (Yorkville Highlands AVA)\*\*
  - 7 Vineyards
  - Appx. 97 acres under cultivation
- Other agriculture (excluding grazing)
  - Appx. 590 acres (gross total ownership)

\* Source: Anderson Valley Winegrowers Association (2021)

\*\* Vineyards only within the Navarro River watershed





# AGRICULTURE IT IS NOT ONLY GRAPES





# AGRICULTURE & TOURISM

## ■ THINK

- **The Anderson Valley: Behind the Redwoods, A California Dream** (*The New York Times*)
- **This Secret Corner of California Is a Paradise for Lovers of Great Food and Top-Notch Wines** (*Smithsonian Magazine*)
- **The Winding Roads of Anderson Valley** (*The Washington Post*)



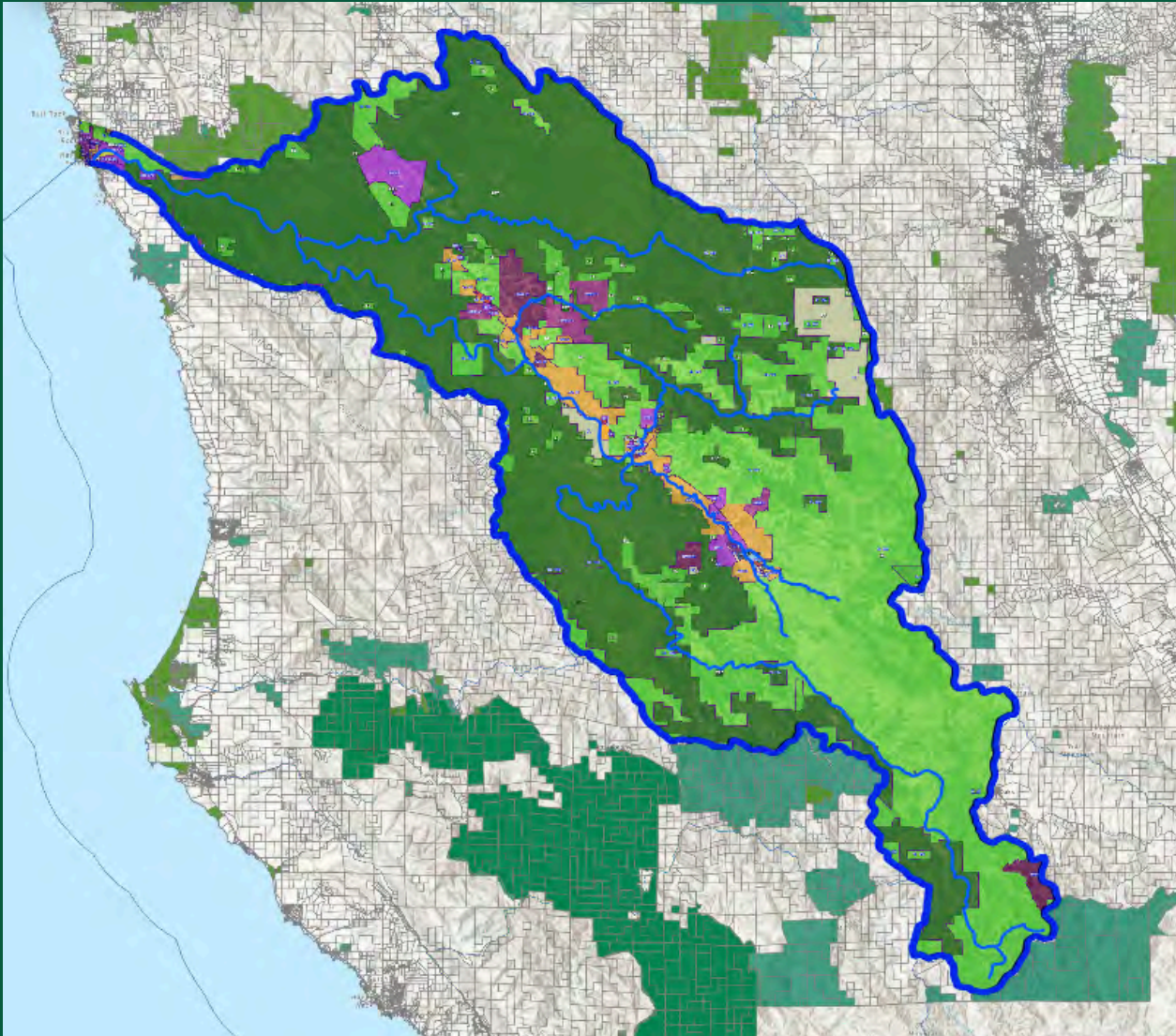
# AGRICULTURE & TOURISM

## ■ THINK

- **Uncorking the Perfect Long Weekend in California's Anderson Valley (*The Wall Street Journal*)**
- **10 Reasons You'll Fall In Love With America's Greenest Wine Region (*Travel*)**
- **Anderson Valley & The Mendocino Coast Are The New California Dream (*Travel Magazine*)**



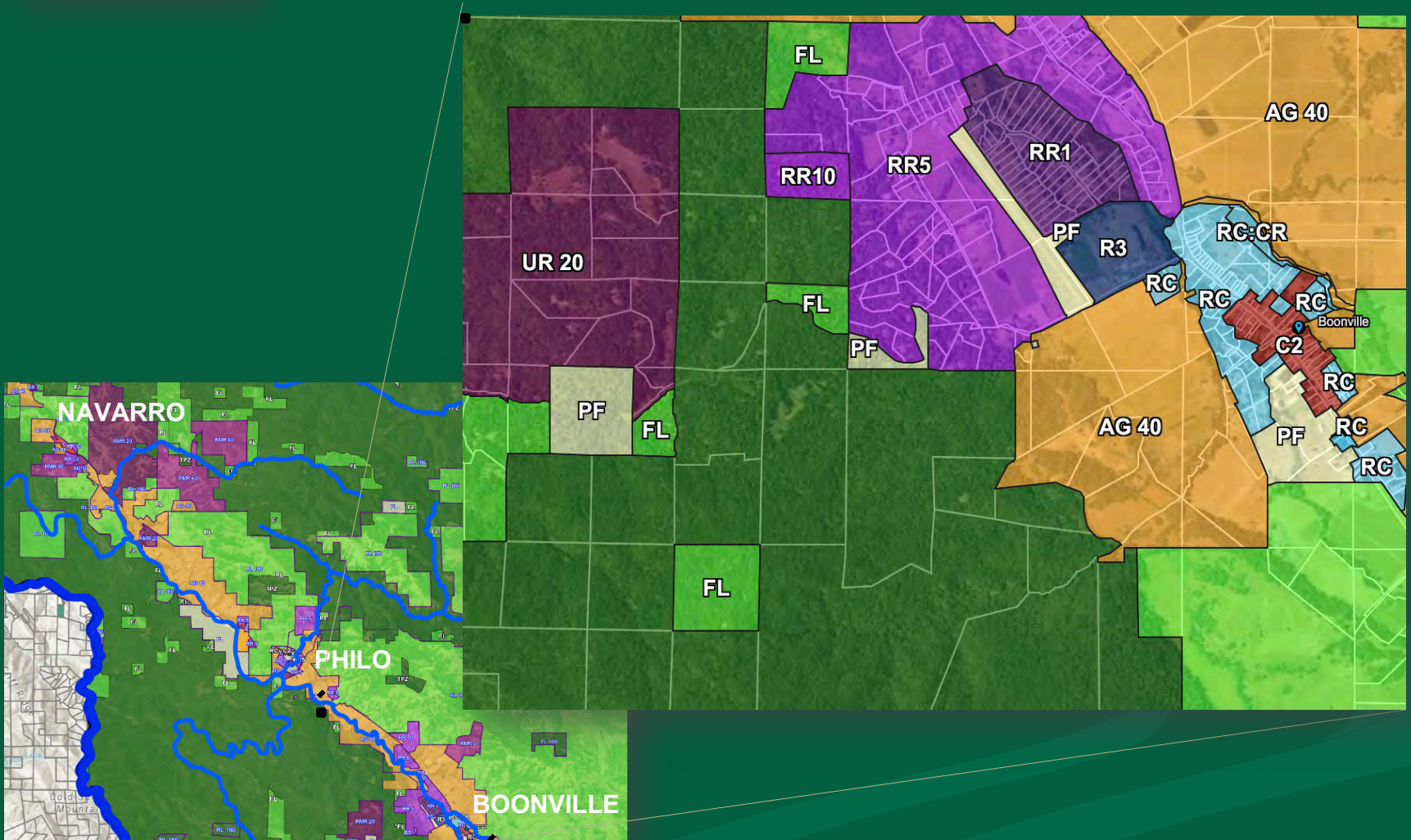
# LAND USE, GENERAL PLAN, AND ZONING THE COUNTY PERSPECTIVE





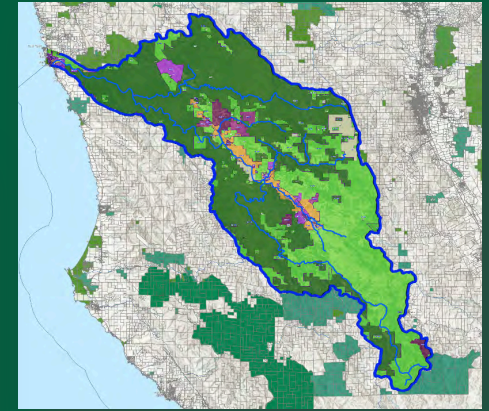


# LAND USE, GENERAL PLAN, AND ZONING THE COUNTY PERSPECTIVE





# LAND USE CHANGE AND GROWTH



**Rangeland 160**



**Commercial/  
Residential**



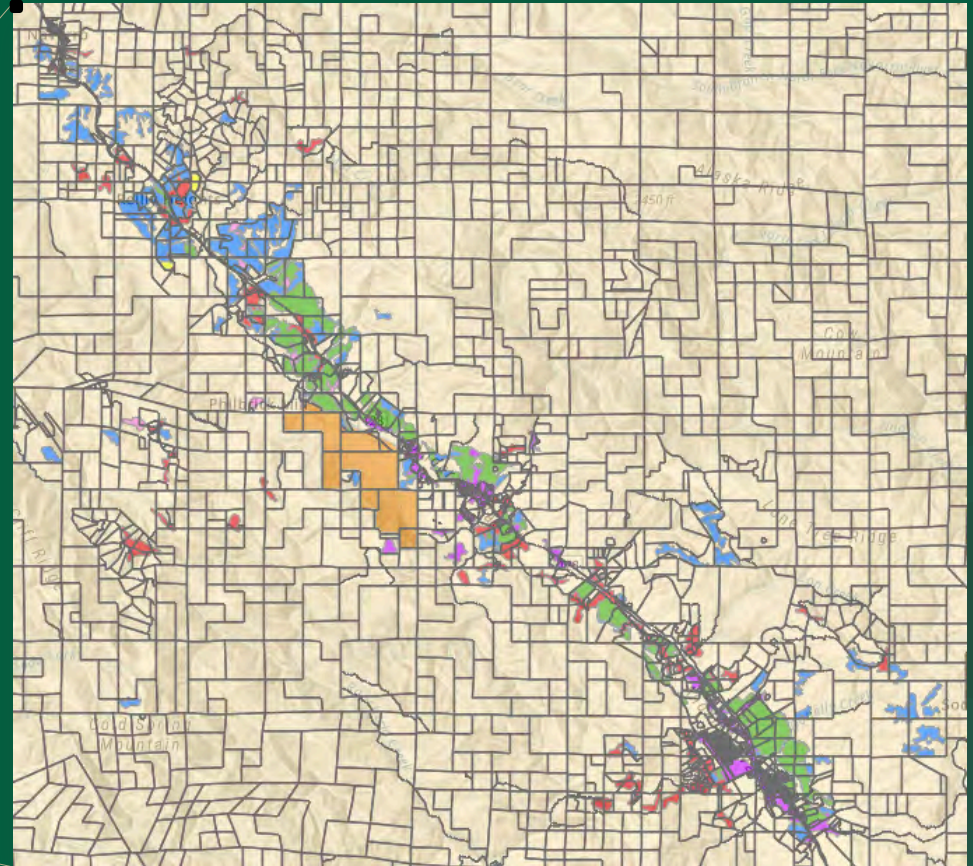
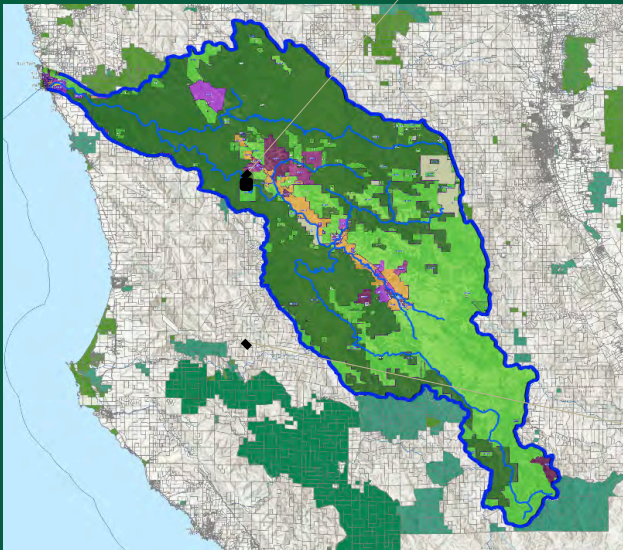
**Rangeland 160**



**Forestland 160 /  
Timber Preserve**



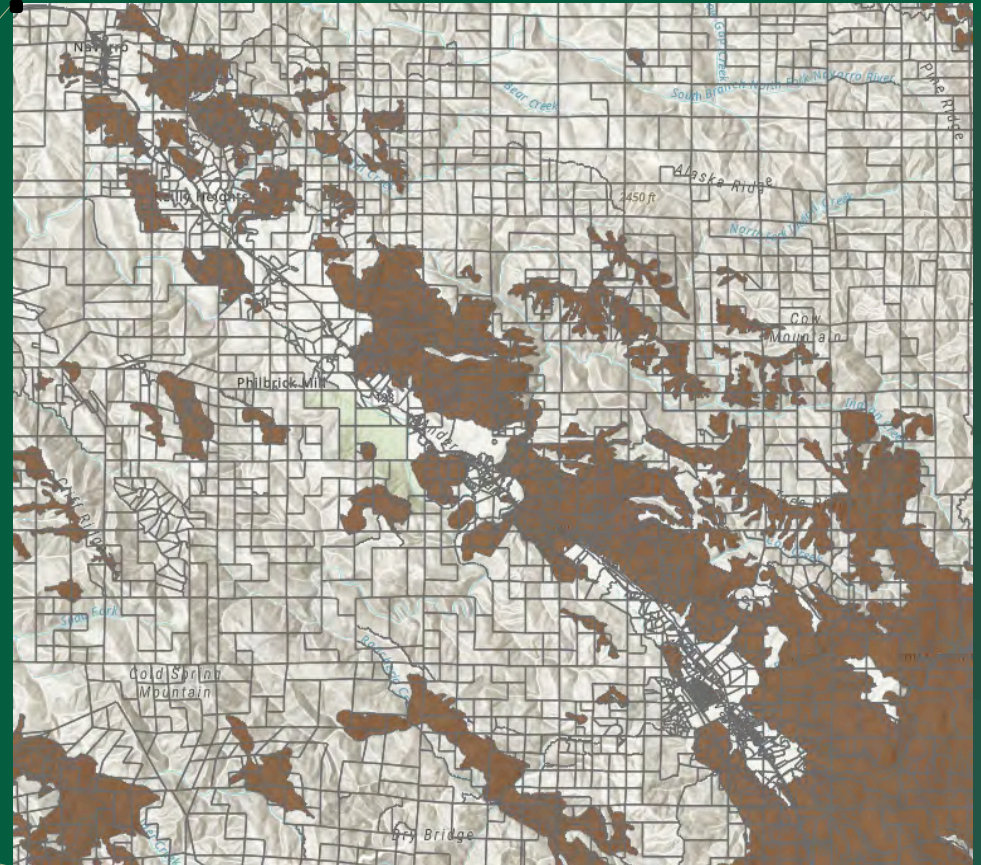
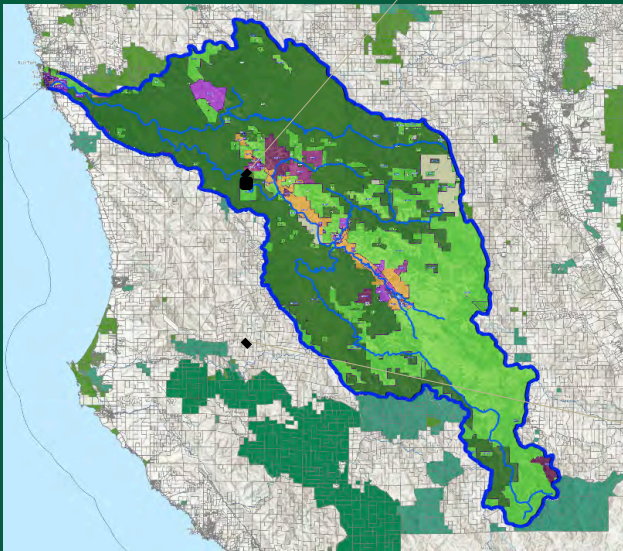
# SUSTAINABLE AGRICULTURAL LAND CONSERVATION PROGRAM (SALC): IMPORTANT FARMLAND





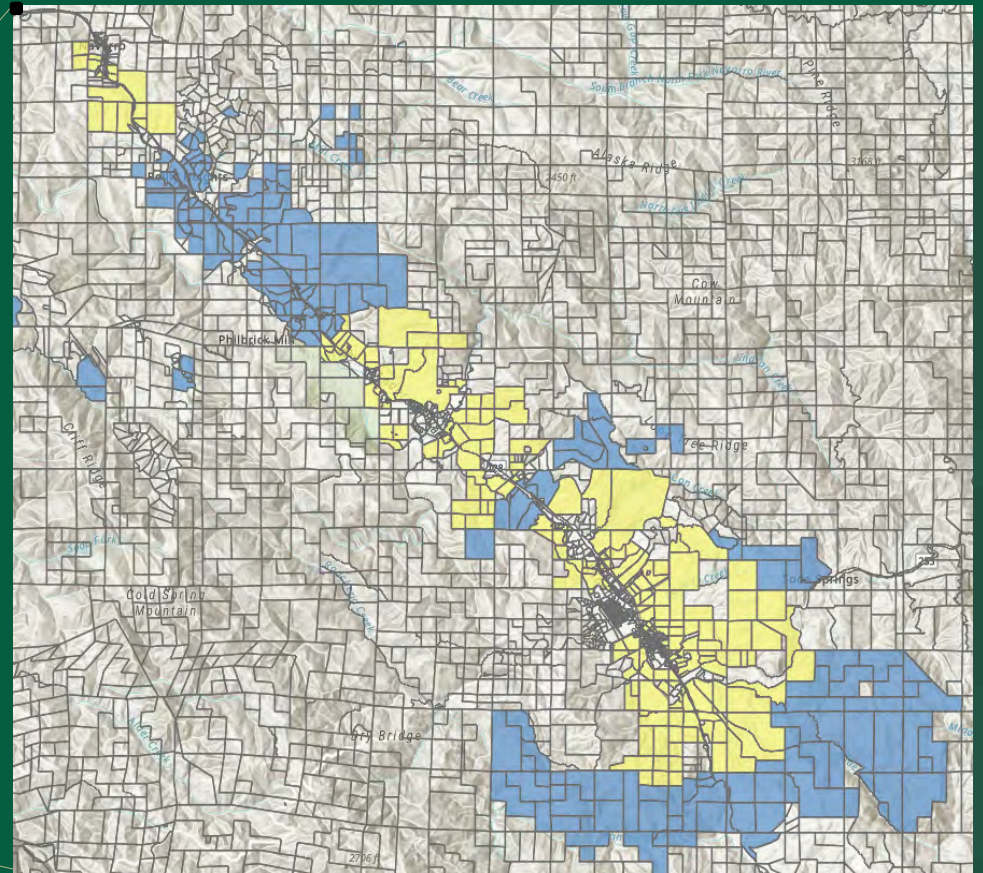
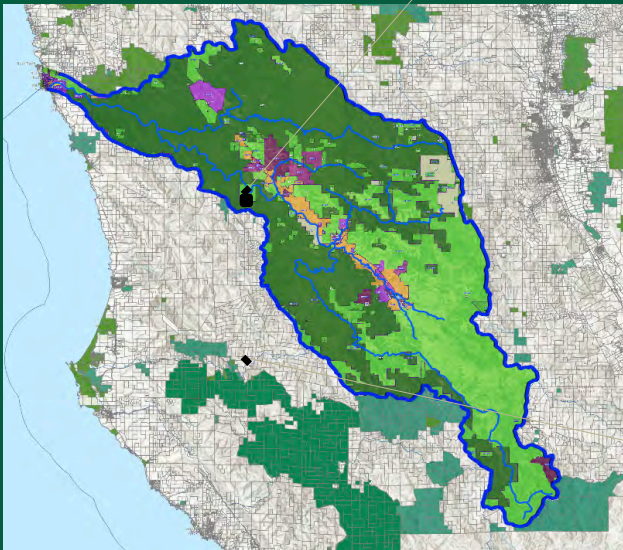


# SALC IMPORTANT RANGELAND





# SALC: POTENTIAL THREATENED LANDS





# THE WATERSHED PERSPECTIVE FROM RIDGETOPS TO THE RIVER



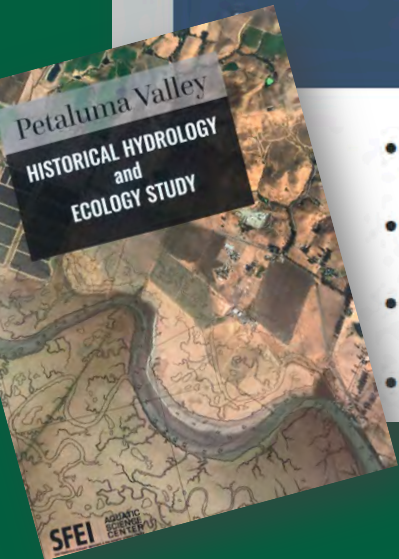
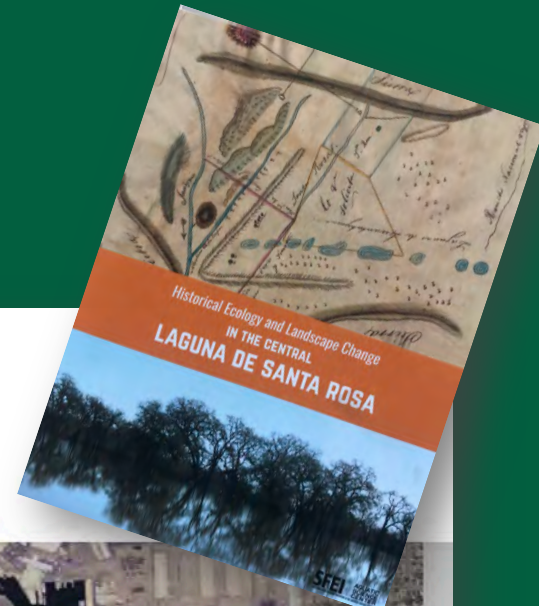


# THE WATERSHED BACK TO THE FUTURE

San Francisco Estuary Institute

## Why historical ecology?

Using the past to understand the present landscape  
and envision its future potential



- Not just the “way things were,” but the “way things work”
- Understand drivers of environmental change (and persistence)
- Envision local potential: opportunities, constraints, and reality checks
- Not about recreating the past!



# THE WATERSHED THE RIVER

